

Symphony nr. 18 in F major K. 130

WOLFGANG AMADEUS MOZART (1756-1791)

ALLEGRO.

Violino II

p

6

f

13

p *cresc. f*

19

25

p

31

tr tr tr tr tr

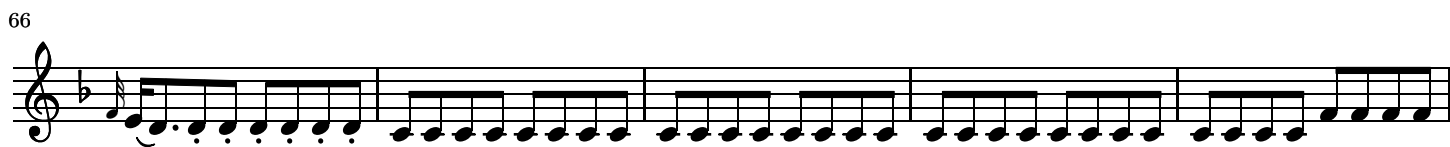
36

tr tr tr

41

p

Detailed description of the musical score: The score for Violino II begins in measure 1 with a rest followed by a half note F4 and quarter notes A4, C5, B4. Measure 5 ends with a half note F4. Measure 6 starts with a half note F4 and quarter notes A4, C5, B4. Measure 10 has a half note F4 and quarter notes A4, C5, B4. Measure 13 starts with a half note F4 and quarter notes A4, C5, B4. Measure 17 has a half note F4 and quarter notes A4, C5, B4. Measure 19 starts with a half note F4 and quarter notes A4, C5, B4. Measure 23 has a half note F4 and quarter notes A4, C5, B4. Measure 25 starts with a half note F4 and quarter notes A4, C5, B4. Measure 29 has a half note F4 and quarter notes A4, C5, B4. Measure 31 starts with a half note F4 and quarter notes A4, C5, B4. Measure 35 has a half note F4 and quarter notes A4, C5, B4. Measure 39 starts with a half note F4 and quarter notes A4, C5, B4. Measure 41 has a half note F4 and quarter notes A4, C5, B4. Measure 45 starts with a half note F4 and quarter notes A4, C5, B4. Measure 48 ends with a half note F4.



101

106

111

118

123

128

ANDANTINO GRAZIOSO.

Violino II

con sordino

p

10

21

30

40

53

63

73

82

91

99

108

MENUETTO.

Violino II

8

Trio.

14

22

31

p *f* *f* *p* *cresc.* *f* *tr*

Men.D.C.

ALLEGRO MOLTO.

Violino II

6

11

18

f *f* *p*

23



29



35



42



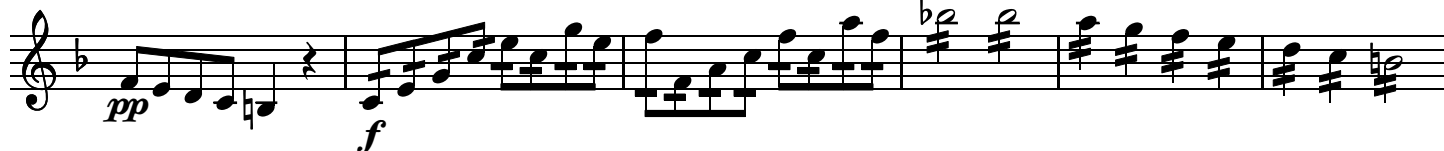
49



55



60



66



72



79

f *p*

85

f *p*

92

f *p*

99

f

107

f *f*

113

119

125

131

p

136



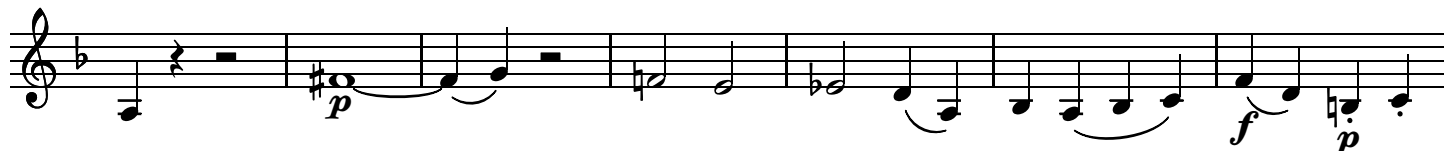
142



148



155



162



168



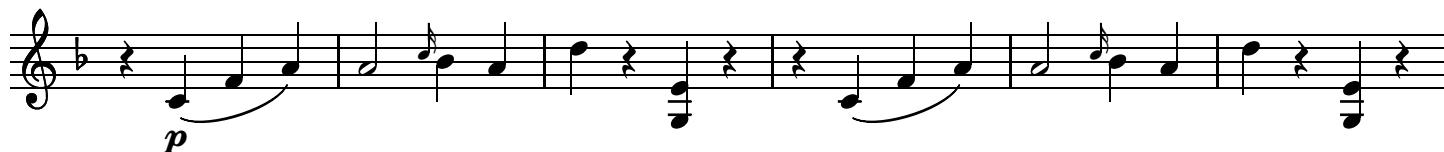
173



179



185



191

